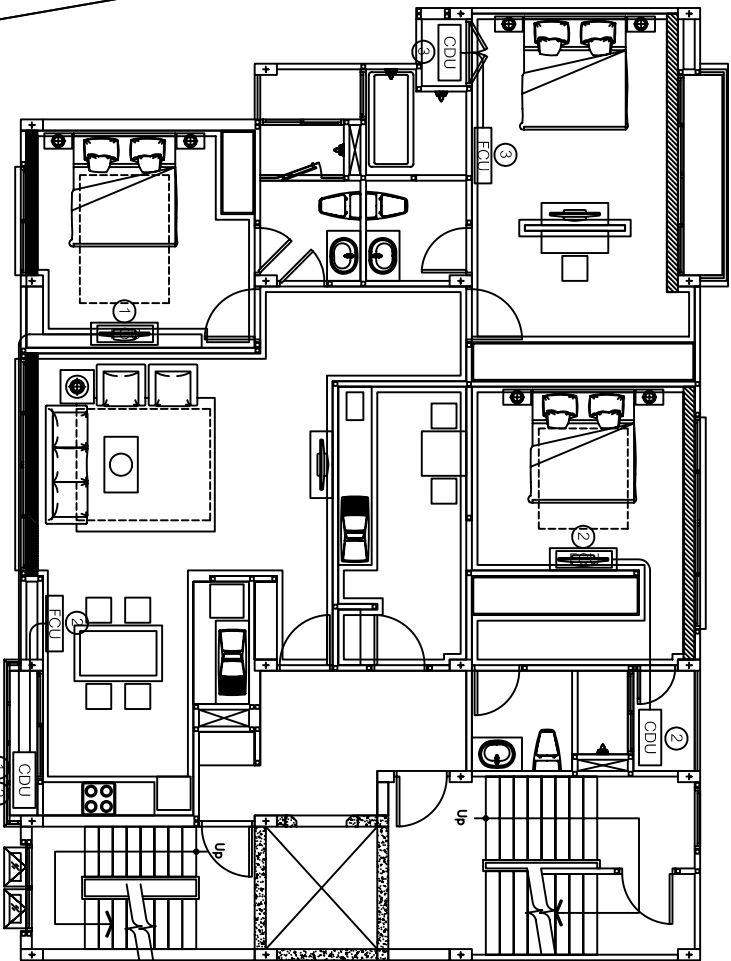


(PROPERTY LINE 20.78 m.)

(PROPERTY LINE 19.75 m.)

(PROPERTY LINE 17.39 m.)

(PROPERTY LINE 19.13 m.)



AIR CONDITION KEY

- FCU 1 DAIKIN RE12HV2S/FTE12HV2S 12300 BTU
- CDU 1
- FCU 2 DAIKIN R28GV2S/FT28GV2S 24500 BTU
- CDU 2
- FCU 3 DAIKIN RE18GV2S/FTE18GV2S 17750 BTU
- CDU 3
- FCU 4 TRANE TTK518LBMCD018AA 18000 BTU
- CDU 4
- FCU 5 TRANE TTK524LBMCD024AA 24000 BTU
- CDU 5
- FCU 6 TRANE TTK060KDMC060DB 60000 BTU
- CDU 6
- FCU 7 TRANE TTK530KBMCD030EB 30000 BTU
- CDU 7

AIR CONDITIONERS LAYOUT 2nd. ~4th. FLOOR

SCALE 1 : 1

REVISION



Idealist

IDEALIST CO.,LTD.

4/1310 Triemahn Village 6 set 10
 Navamintra Rd. Banguekoom Bangkok 10230
 Telfax : 0-2947-9105, 0-2947-9106



Expert Solution In Air Conditioning

COOL AIR ENGINEERING CO.,LTD

11/13 Moo10, Soi Ladpraoenghin 37,
 Ladpraoenghin Road, Ladprao, Bangkok 10230
 TEL : 0-2631-7818, FAX : 0-2631-7819



NJS

SCALE

01

| NO. | DATE | DESCRIPTION | APPROVED |
|-----|-------------------------|-------------|------------|
| 01 | Drawn Date 13-june-2008 | | |
| | CHECKED | DESIGNED | APPROVED |
| | Patipham R. Khun Num | Patipham R. | Khun Arnon |

TONGLOR SOI III RESIDENCE

AIR CONDITIONERS LAYOUT & DUCT TYPE SYSTEM

DN08B020 / 4